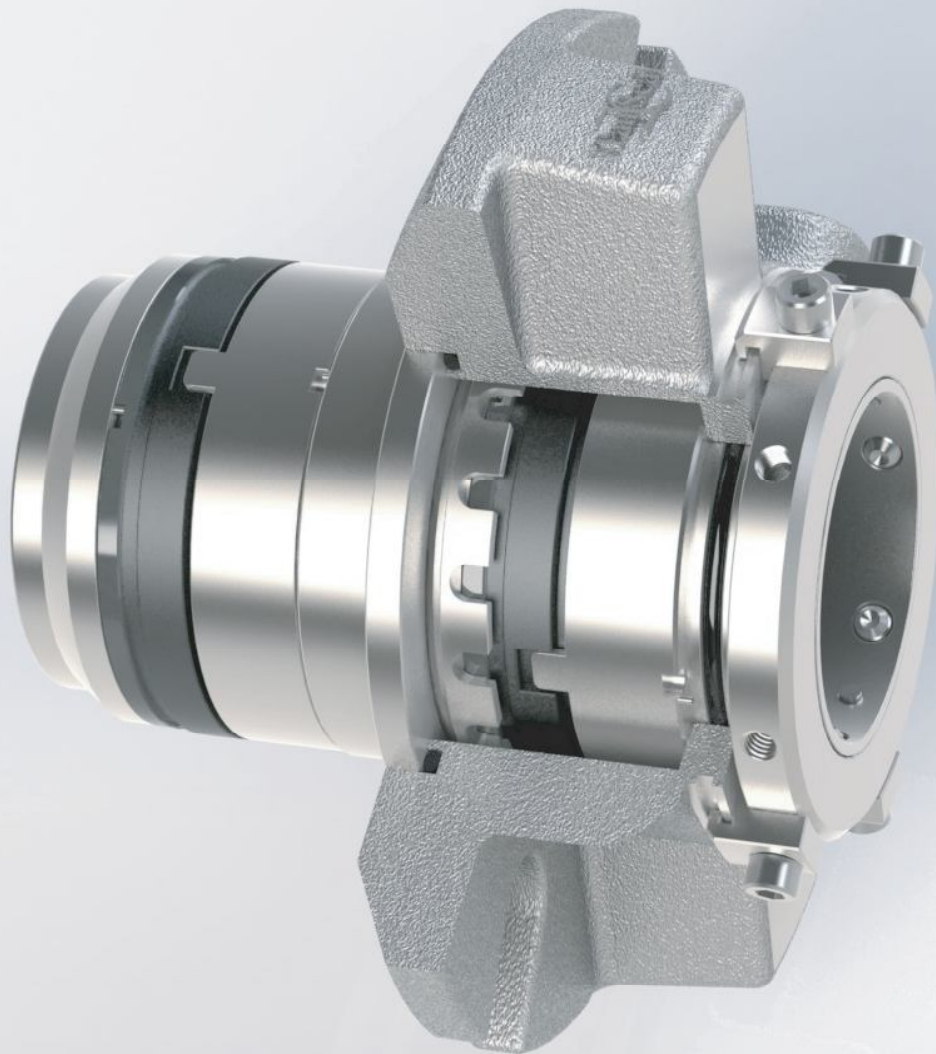


Tan Seal



**SELLO MECANICO TIPO TG
CARTUCHO UNIVERSAL**

Materiales de Construcción:

Partes Metálicas:

316 S.S.
Titanio
(disponible en otros metales)

Cara estacionaria:

Carbón
Carburo de Silicio
Carburo de Tungsteno

Cara rotatoria:

Carburo de silicio
Carburo de Tungsteno

Elastómeros:

Fluoroelastómeros
(Viton)
Perfluoroelastómeros
(Chemraz) (Kalrez)
EPR (Etileno propileno)
AFLAS

Rangos de Operación:

Temperatura:

-42°C a 327°C

Presión:

Hasta 75mm/3.000":
21 bar g/300 psig max

Arriba de 75mm/3.000":
13 bar g/200 psig max

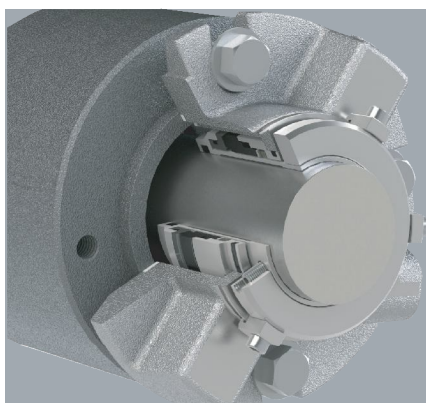
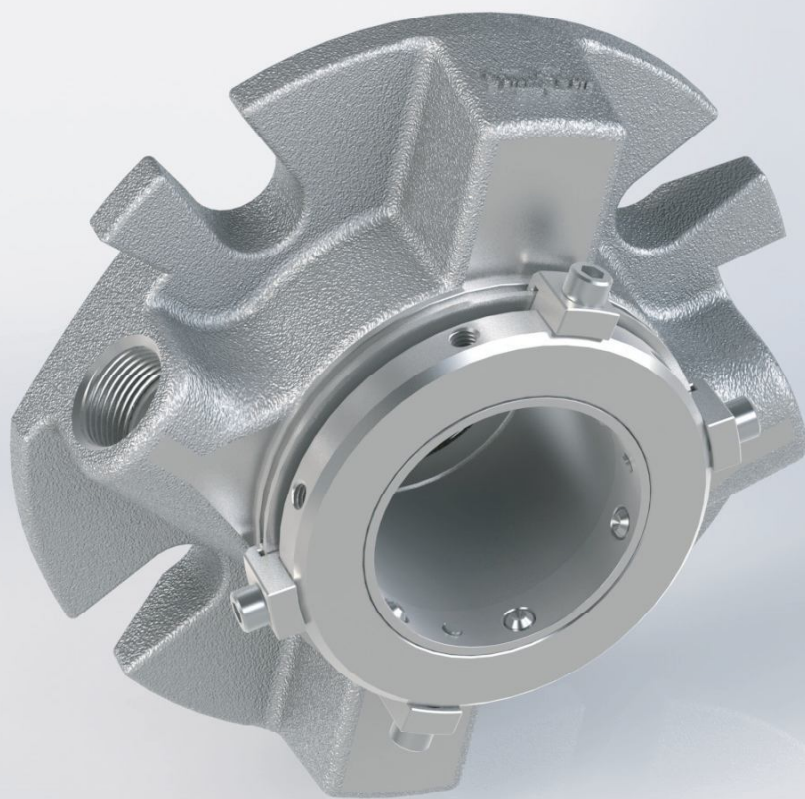
Velocidad:

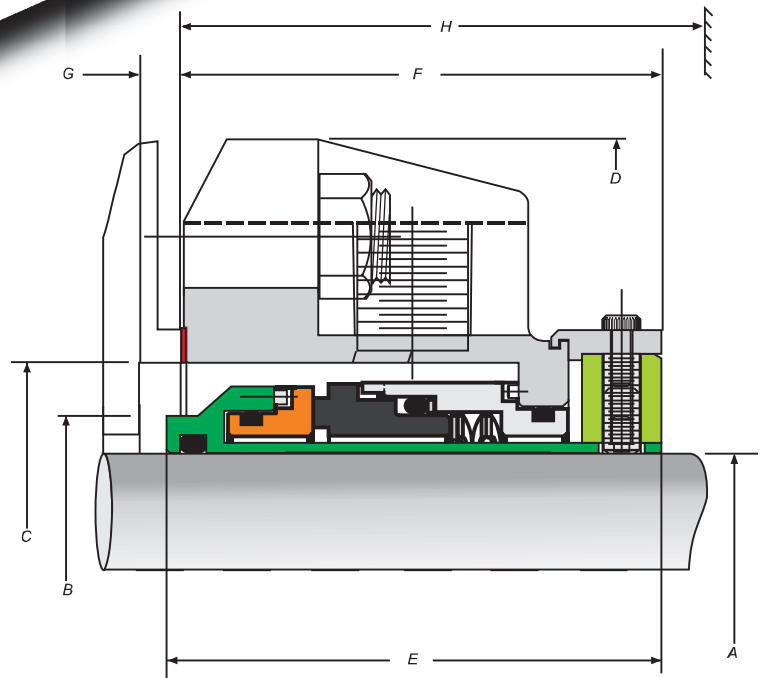
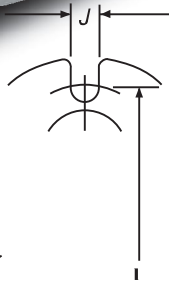
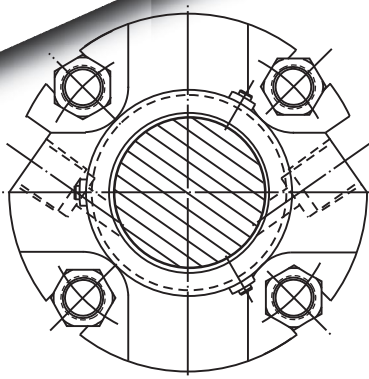
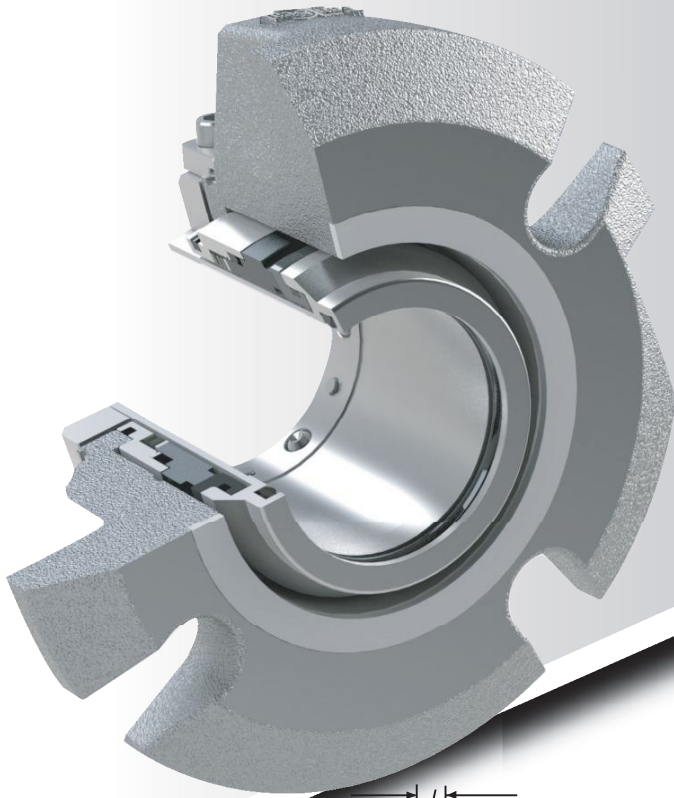
Arriba de 25 m/s

SELLO MECANICO TIPO TG SENCILLO CARTUCHO UNIVERSAL

El sello mecánico tipo Cartucho Universal TG Sencillo, está diseñado para aplicaciones generales en bombas ANSI, ISO y DIN. También para servicios industriales y de proceso, como pueden ser químico, petroquímico, farmacéutico, alimenticio, papelerero, etc.

El diseño cartucho tipo TG Sencillo es de fácil montaje, versatilidad de usos, confiabilidad de operación y requerimientos ambientales.





SELLO MECANICO TIPO TG SENCILLO CARTUCHO UNIVERSAL CON EMPAQUE TIPO O-RING

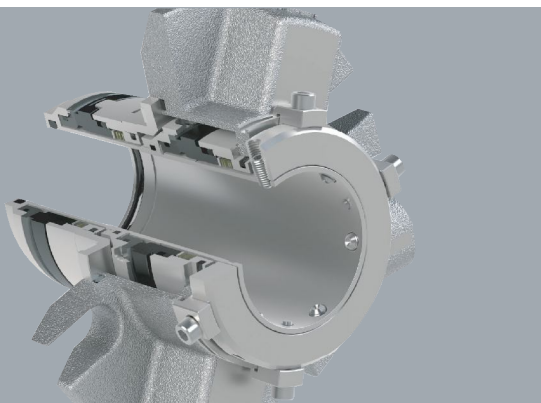
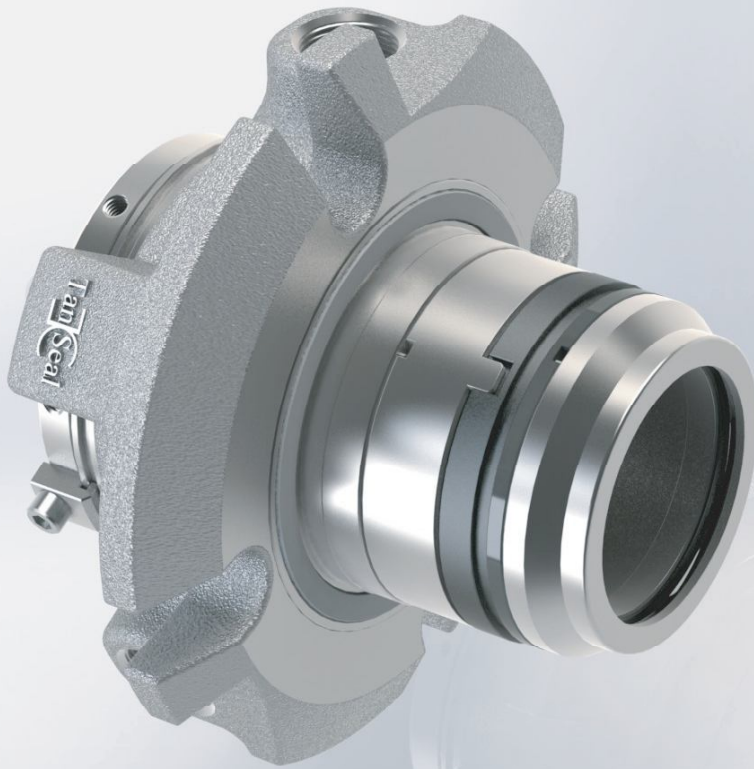
A	B	Diam.		D	E	F	G	H	I		J
Diámetro Int. Sello	Diámetro Ext. Sello	Min de caja	Max de caja	Diam. Ext de Brida	Longitud del sello	Longitud de instalación	Prof. Min de caja	Próxima Obst. Min	Diámetro Mínimo de Circulo de Birlos		Ancho de ranura
									Birlo/D.C.B	Birlo/D.C.B	
1.000"	1.375"	1.445"	1.889"	4.000"	1.989"	1.937"	0.160"	2.000"	(1/2")/2.805"	(3/8")/2.680"	0.525"
1.125"	1.500"	1.500"	2.015"	4.125"	2.125"	2.062"	0.125"	2.125"	(1/2")/2.933"	(3/8")/2.808"	0.525"
1.250"	1.625"	1.625"	2.294"	4.250"	2.125"	2.062"	0.125"	2.125"	(1/2")/3.213"	(3/8")/3.088"	0.525"
1.375"	1.750"	1.750"	2.421"	4.375"	2.125"	2.062"	0.125"	2.125"	(1/2")/3.338"	(3/8")/3.213"	0.525"
1.500"	1.937"	2.007"	2.680"	4.875"	2.156"	2.125"	0.156"	2.187"	(1/2")/3.599"	(3/8")/3.474"	0.525"
1.625"	2.062"	2.312"	2.812"	5.000"	2.156"	2.125"	0.156"	2.187"	(1/2")/3.766"	(3/8")/3.641"	0.562"
1.750"	2.170"	2.240"	2.918"	5.250"	2.234"	2.125"	0.156"	2.187"	(1/2")/3.875"	(3/8")/3.750"	0.562"
1.875"	2.312"	2.382"	2.918"	5.250"	2.234"	2.125"	0.156"	2.187"	(1/2")/3.875"	(3/8")/3.750"	0.562"
2.000"	2.437"	2.507"	3.015"	5.500"	2.375"	2.312"	0.187"	2.375"	(1/2")/4.000"	(3/8")/3.875"	0.562"
2.125"	2.562"	2.632"	3.360"	5.837"	2.375"	2.312"	0.187"	2.375"	(5/8")/4.469"	(1/2")/4.344"	0.687"
2.250"	2.687"	2.757"	3.485"	6.500"	2.375"	2.312"	0.187"	2.375"	(5/8")/4.566"	(1/2")/4.441"	0.687"
2.375"	2.812"	2.882"	3.610"	6.500"	2.500"	2.484"	0.143"	2.528"	(5/8")/4.719"	(1/2")/4.594"	0.687"
2.500"	3.062"	3.125"	3.891"	6.750"	2.500"	2.484"	0.125"	2.625"	(5/8")/5.000"	(1/2")/4.875"	0.687"
2.625"	3.312"	3.375"	4.062"	6.750"	2.500"	2.500"	0.125"	2.562"	(5/8")/5.170"	(1/2")/5.045"	0.687"
2.750"	3.312"	3.500"	4.062"	6.750"	2.562"	2.500"	0.125"	2.562"	(5/8")/5.170"	(1/2")/5.045"	0.687"
2.875"	3.625"	3.625"	4.186"	7.000"	2.562"	2.500"	0.125"	2.562"	(5/8")/5.312"	(1/2")/5.187"	0.687"
3.000"	3.625"	3.750"	4.469"	7.750"	2.562"	2.562"	0.125"	2.625"	(3/4")/5.720"	(5/8")/5.595"	0.812"
3.125"	3.750"	3.853"	4.600"	7.875"	2.562"	2.562"	0.125"	2.687"	(3/4")/5.845"	(5/8")/5.720"	0.812"
3.250"	3.750"	3.853"	4.600"	7.875"	2.562"	2.562"	0.177"	2.635"	(3/4")/5.845"	(5/8")/5.720"	0.812"
3.375"	4.000"	4.125"	4.850"	8.125"	2.562"	2.562"	0.125"	2.687"	(3/4")/6.095"	(5/8")/5.970"	0.812"
3.500"	4.125"	4.250"	4.975"	8.250"	2.562"	2.562"	0.125"	2.687"	(3/4")/6.220"	(5/8")/6.095"	0.812"
3.625"	4.218"	4.343"	5.100"	8.375"	2.562"	2.562"	0.125"	2.687"	(5/8")/6.250"	(1/2")/6.125"	0.687"
3.750"	4.343"	4.468"	5.199"	8.500"	2.562"	2.562"	0.125"	2.687"	(5/8")/6.770"	(1/2")/6.645"	0.687"
3.875"	4.468"	4.593"	5.375"	8.750"	2.562"	2.562"	0.125"	2.687"	(3/4")/6.636"	(5/8")/6.511"	0.812"

SELLO MECANICO TIPO TG DOBLE CARTUCHO UNIVERSAL

El sello mecánico tipo Cartucho Universal TG Doble, está diseñado para equipos donde se requiere mayor seguridad, debido a aplicaciones tóxicas, inflamables, corrosivas o bien, que impacten ambientalmente. Por lo que es necesario la seguridad de un sello secundario, manteniendo los beneficios de ser un sello cartucho. De igual forma se puede utilizar en bombas ANSI, ISO y DIN.

El diseño cartucho TG doble es de fácil montaje, versatilidad de usos, confiabilidad de operación y requerimientos ambientales.

Para la selección apropiada de algún servicio específico, consulte con nuestro departamento de Ingeniería de Dispositivos Tanseal.



TanSeal

Materiales de Construcción:

Partes Metálicas:
316 S.S.
Titanio
(disponible en otros
metales)

Cara estacionaria:
Carbón
Carburo de Silicio
Carburo de Tungsteno

Cara rotatoria:
Carburo de silicio
Carburo de Tungsteno

Elastómeros:
Fluorelastómeros
(Viton)
Perfluorelastómeros
(Chemraz) (Kalrez)
EPR (Etileno propileno)
AFLAS

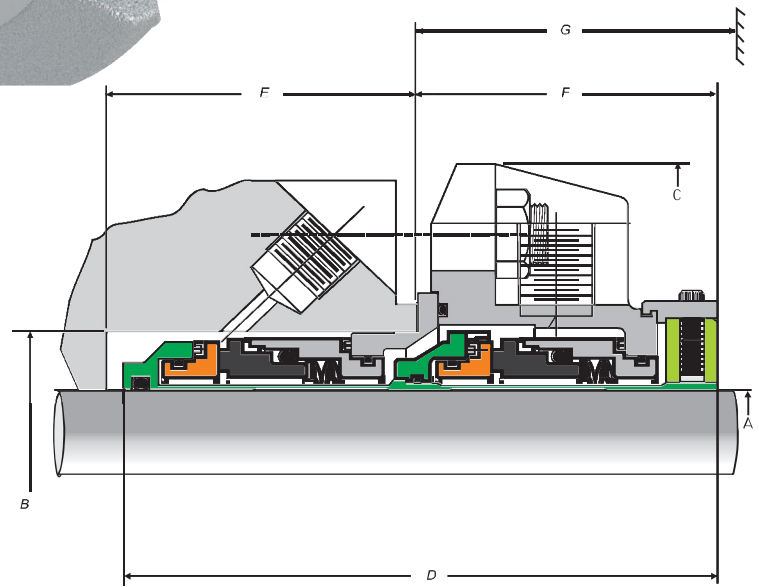
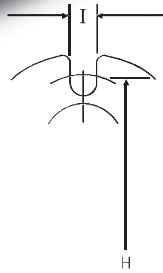
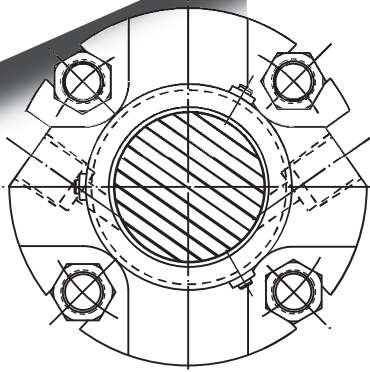
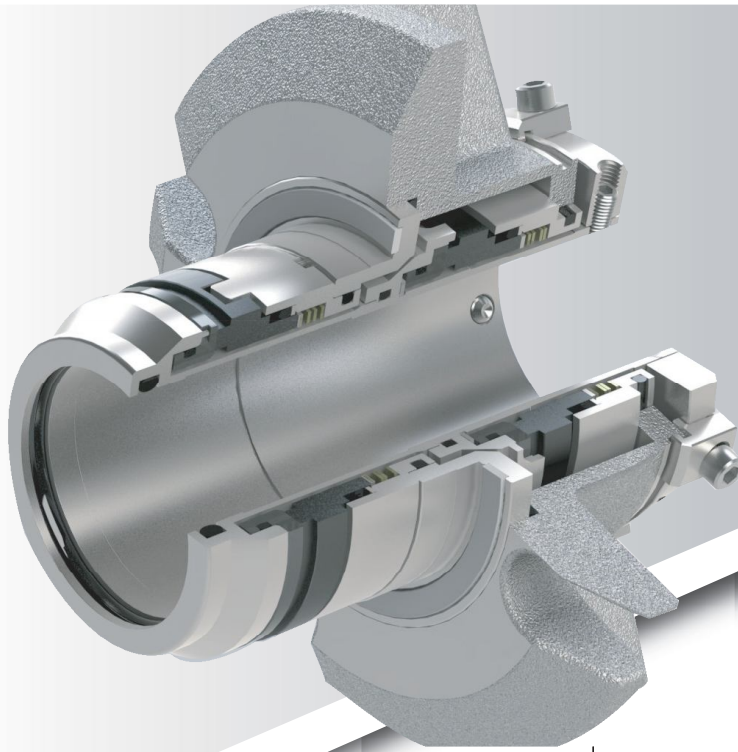
Rangos de Operación:

Temperatura:
-42°C a 327°C

Presión:
Hasta 75mm/3.000":
21 bar g/300 psig max
Arriba de 75mm/3.000":
13bar g/200 psig max

Velocidad:
Arriba de 25 m/s





SELLO MECANICO TIPO TG CARTUCHO UNIVERSAL DOBLE CON EMPAQUE TIPO O-RING

A	B	C	D	E	F	G	H	I	
Diam. Interior	Diam. Min de caja	Diam. Max de caja	Diam. Exterior de brida	Longitud de sello	Profundidad Min de caja	Longitud de Inst	Diámetro Mínimo de Círculo de Birlos	Ancho de ranura	
							Birlos/D.C.B	Birlos/D.C.B	
1.000"	1.625"	1.889"	4.000"	3.705"	1.876"	1.954"	(1/2")/2.805"	(3/8")/2.680"	0.525"
1.125"	1.750"	2.015"	4.125"	3.851"	1.914"	2.062"	(1/2")/2.933"	(3/8")/2.808"	0.525"
1.250"	1.875"	2.294"	4.250"	3.851"	1.914"	2.062"	(1/2")/3.312"	(3/8")/3.088"	0.525"
1.375"	2.000"	2.421"	4.375"	3.851"	1.914"	2.062"	(1/2")/3.338"	(3/8")/3.213"	0.525"
1.500"	2.250"	2.680"	4.875"	3.995"	1.995"	2.125"	(1/2")/3.599"	(3/8")/3.474"	0.525"
1.625"	2.375"	2.812"	5.000"	3.995"	1.995"	2.125"	(1/2")/3.766"	(3/8")/3.641"	0.562"
1.750"	2.480"	2.918"	5.250"	3.995"	1.995"	2.125"	(1/2")/3.875"	(3/8")/3.750"	0.562"
1.875"	2.625"	2.918"	5.250"	3.995"	1.995"	2.125"	(1/2")/4.875"	(3/8")/3.750"	0.562"
2.000"	2.750"	3.015"	5.500"	4.355"	2.167"	2.312"	(1/2")/4.000"	(3/8")/3.875"	0.562"
2.125"	2.875"	3.360"	5.589"	4.355"	2.167"	2.312"	(5/8")/4.469"	(1/2")/4.344"	0.687"
2.250"	3.000"	3.485"	6.500"	4.355"	2.167"	2.312"	(5/8")/4.566"	(1/2")/4.441"	0.687"
2.375"	3.125"	3.610"	6.500"	4.545"	2.204"	2.466"	(5/8")/4.719"	(1/2")/4.594"	0.687"
2.500"	3.375"	3.891"	6.750"	4.545"	2.107"	2.562"	(5/8")/5.000"	(1/2")/4.875"	0.687"
2.625"	3.625"	4.062"	6.750"	4.594"	2.219"	2.500"	(5/8")/5.170"	(1/2")/5.045"	0.687"
2.750"	3.625"	4.062"	6.750"	4.594"	2.219"	2.500"	(5/8")/5.170"	(1/2")/5.045"	0.687"
2.875"	3.750"	4.186"	7.000"	4.594"	2.219"	2.500"	(5/8")/5.312"	(1/2")/5.187"	0.687"
3.000"	4.000"	4.469"	7.750"	4.594"	2.157"	2.562"	(3/4")/5.720"	(5/8")/5.595"	0.812"
3.125"	4.125"	4.600"	7.875"	4.687"	2.250"	2.562"	(3/4")/5.845"	(5/8")/5.720"	0.812"
3.250"	4.134"	4.600"	7.437"	4.687"	2.302"	2.510"	(3/4")/5.845"	(5/8")/5.720"	0.812"
3.375"	4.375"	4.850"	8.125"	4.687"	2.250"	2.562"	(3/4")/6.095"	(5/8")/5.970"	0.812"
3.500"	4.500"	5.975"	8.250"	4.687"	2.250"	2.562"	(3/4")/6.220"	(5/8")/6.095"	0.812"
3.625"	4.625"	5.100"	8.375"	4.687"	2.250"	2.562"	(5/8")/6.250"	(1/2")/6.125"	0.687"
3.750"	4.724"	5.199"	8.750"	4.687"	2.250"	2.562"	(5/8")/6.770"	(1/2")/6.645"	0.687"
3.875"	4.875"	5.375"	8.750"	4.687"	2.250"	2.562"	(3/4")/6.636"	(5/8")/6.511"	0.812"



www.tankseal.com.mx

Planta Mérida, Yuc
Tel. (999) 9461601
(999) 9461589
Calle 17 no. 323 Cd. Industrial
contacto@tankseal.com.mx
ventas@tankseal.com.mx

Oficina Salamanca, Gto
salamanca@tankseal.com.mx

Oficina Coatzacoalcos, Ver
Tel (921) 156-69-04
coatzacoalcos@tankseal.com.mx

Oficina Altamira, Tams
Tel (833) 217-33-80
altamira@tankseal.com.mx